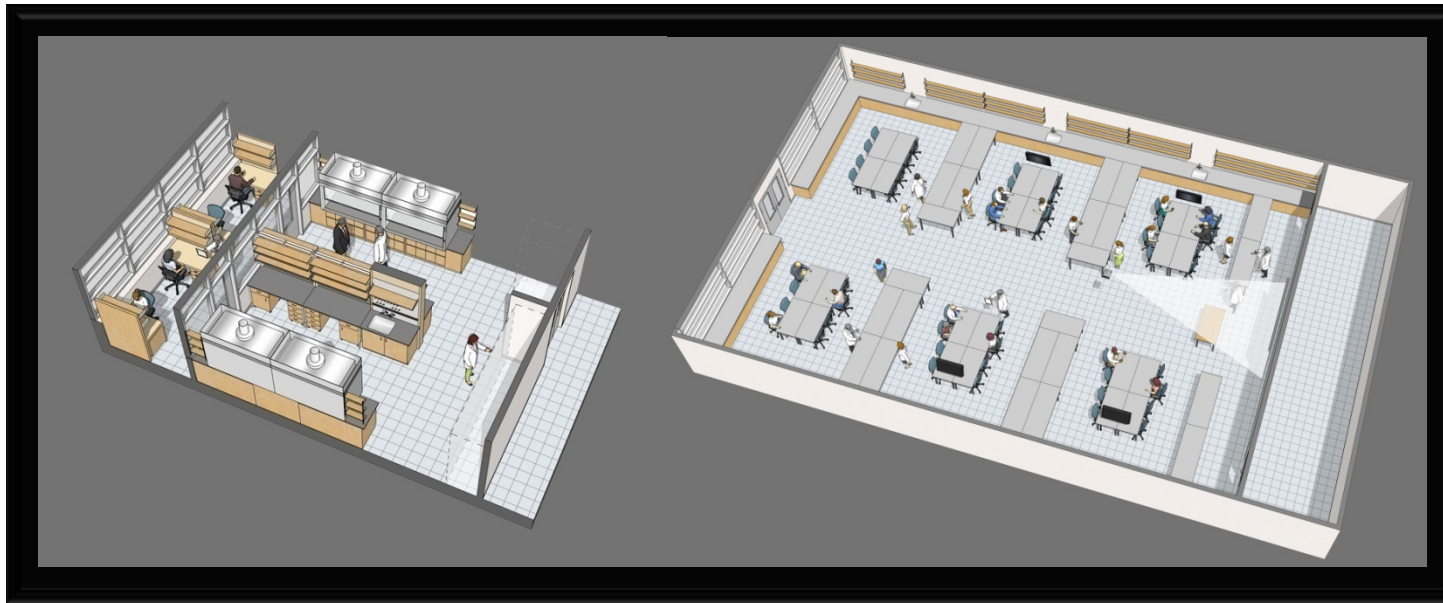


VCU School of Pharmacy: Planning for the Future



Virginia Commonwealth University
January 8, 2008

Virginia Commonwealth University: Establishing Health Professional Programs Across the Commonwealth in Health Sciences

- Medical and Pharmacy Schools with Northern Va Divisions at INOVA
- Nurse Anesthesia program in Abingdon, Va
- Family practice programs in Tidewater (Riverside), Northwest Va (Winchester), Rural Southside (Blackstone), Northern Va (Fairfax)
- Plans for Dental clinic in SW Va in Wise
- Regional learning hubs in pharmacy: Tidewater, Charlottesville, Roanoke,

Curriculum and enrollment will determine future facilities size and configuration

- Accreditation standards place greater emphasis on direct patient care outcomes rather than prescription dispensing
- Increased curricular focus on active learning and small group conferences
- Clinical skills labs and simulation labs require significant restructuring
- Increased emphasis on clinical translational research and basic science research requires new laboratory facilities

Curriculum and enrollment will determine future facilities size and configuration

- Virginia needs more pharmacists, particularly in:
 - Northern VA
 - SW VA
 - Eastern Shore
- Currently 20 students per class complete P3 and P4 year in Northern VA at Inova Health System
- A similar model can be extended to SW VA and Eastern Shore

Curriculum and enrollment will determine future facilities size and configuration

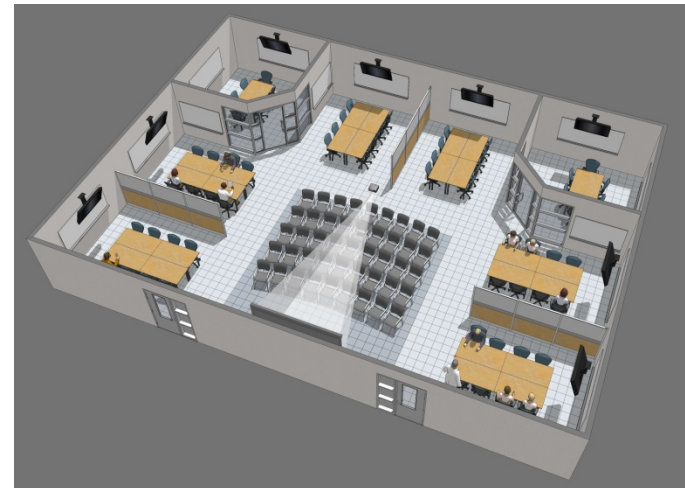
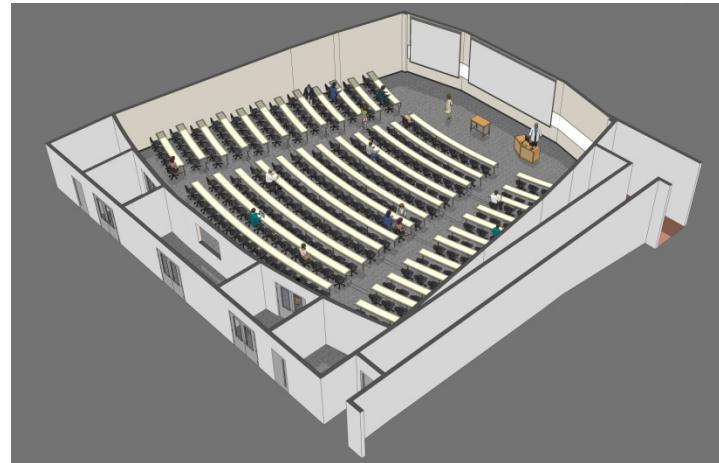
- Current PharmD class size is 130
- Plan for expansion to 175
 - Expand Inova group to 30 P-3 and 30 P-4 students
 - Place 20 P-3 and 20 P-4 class in SW VA
 - Place 20 P-3 and 20 P-4 students in Eastern Shore
- Dedicate tuition revenue increase to support the expansion – VCU will need base adequacy funding from state based on enrollment increase
- Will need modern instructional spaces on MCV Campus
- Will need a facility to use in SW VA and Eastern Shore for distance education and student support space similar to the plans being developed for the Dental School in Wise and the Claude Moore Education Center at INOVA

Key facilities improvements needed at VCU

- Renovations in the Smith Building
 - Floors 1-3 for instructional space
 - Floor 7 for administrative space – new Dean's Office
- Relocation of the Department of Medicinal Chemistry to Biotech 1
 - 10,000 asf of research and office space coming available
 - Lab space already set up for chemistry work
 - Will support research and graduate student growth
 - VCU will need funding for this space since it must be leased or purchased

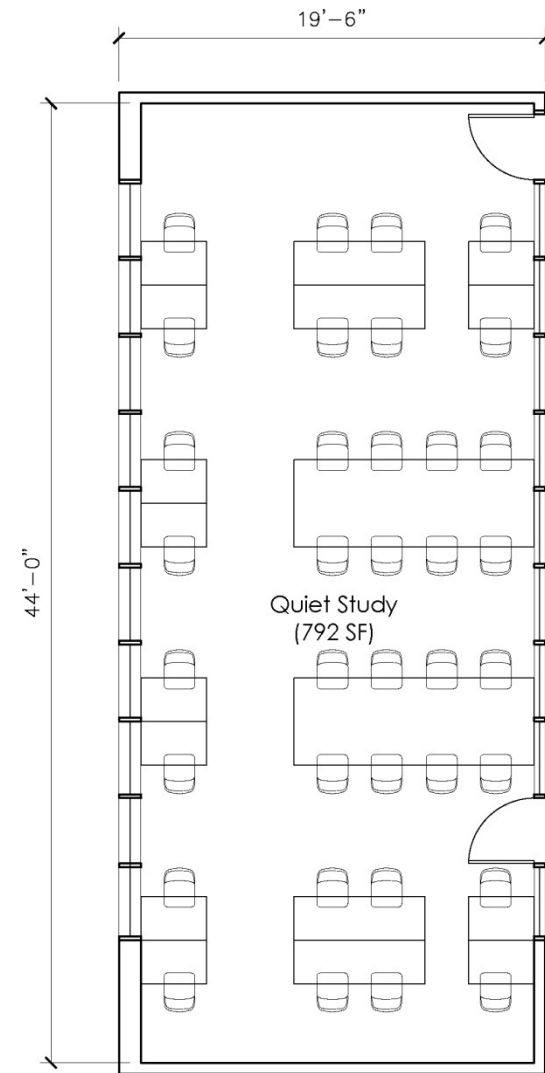
Upgraded instructional space needs

- Large classrooms to hold 200-225 students
- Small group instruction rooms
- Teaching laboratories
 - Compounding/science lab
 - Sterile lab
 - Patient interaction lab
 - Patient assessment suite
 - Simulation lab



Student and social spaces needed

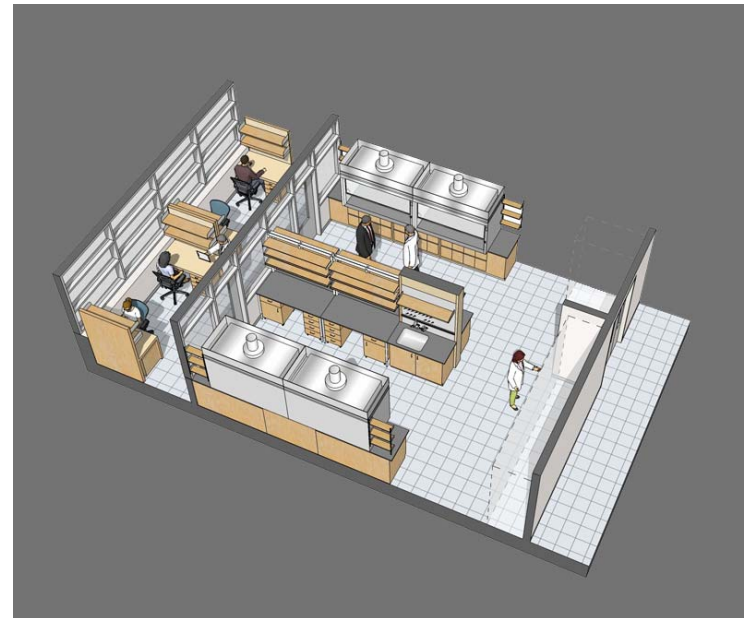
- Common areas
 - Casual meeting
 - Lunch
 - Social events
- Study spaces
 - Group and individual
- Student run organizations
 - Meeting space
 - Storage space



Slide 8

Research and graduate students

- FY07 research funding
 - Total awards \$4.8M
 - NIH awards \$1.7M
 - FY06 NIH ranking 33 of 65 schools
 - #20 school at \$4M
 - #10 school at \$6.8M
- Graduate student enrollment
 - Fall 2007: 16 MS, 52 PhD
 - Current Fall 2013 official SCHEV targets: 12 MS, 70 PhD



Current and planned space allocation for the School of Pharmacy

Building Location	Notes	ASF
Smith Building	Does not include centrally scheduled classroom space that the School has priority for scheduling and does not including vivarium space of 3,847 asf	36,357
Smith centrally schedule classrooms	School of Pharmacy has scheduling priority	6,853
GBJ Auditorium	School of Pharmacy as scheduling priority for this large classroom	2,109
McGuire and Annex	Includes new space assigned to the School in past two years	11,445
McGuire centrally schedule classrooms	School of Pharmacy has scheduling priority	1,712
McGuire	VCUHS Tissue Typing Lab moving in 2008, space committed to School	1,919
Biotech 1	Within the space associated with the Institute for Structural Biology and Drug Discovery	6,578
Goodwin Research Lab		329
North Hospital 8th Floor	Space under renovation for Center for Drug Studies	3,220
West Hospital	Space being retained by Center for Drug Studies	310
Inova Fairfax Hospital	Provide by Inova Health System under MOU for PharmD program	4,580
Total Current/Committed Space		75,412
Future Space Allocations		
Smith	Dept Pharm. Tox move upon completion of MSBII	5,400
McGuire	Dept. Pharm. Tox move upon completion of MSBII	5,600
Smith	Dept. Pharm. Tox move upon completion of new SOM building	4,000
Biotech 1	Relocation of Dept. of Medicinal Chemistry under discussion	10,000
Future Total Space		100,412

Recent benchmarking studies with other institutions have been completed

	U. Conn	U. Wisconsin	U. Kentucky (under construction)	UNC	UMB	VCU (current)	VCU** (2013 official targets)	VCU*** (Proposed)
Student Enrollment								
PharmD	400	520	700	560	700	520	520	680
Graduate	60	80	90	98	106	68	82	96
Space*								
Total ASF	64,000	120,775	143,935	118,700	158,391	75,412	100,412	121,065
SF/PharmD student	160	232	206	212	226	145	193	178
SF/Total students	139	201	182	180	197	128	167	156
NIH Funding FY06	\$1,722,075	\$6,739,448	\$4,388,571	\$8,364,769	\$4,276,797	\$1,878,523		
NIH Ranking	35	13	18	8	21	33		
NIH Funding/SF	\$27	\$56	\$30	\$70	\$27	\$25		
<p>*The total ASF at each institution does not include vivarium space within the facility since these are not dedicated to only one school. The U.Conn total includes a 5,000 sf library within the school. The UNC total includes 35,000 asf in GenMed research building. The UK total does not include shelled space but does include existing research space in other buildings. The U. Wisconsin total includes 9,500 asf of empty space that was formerly library space.</p> <p>**Includes proposed additional space allocations in Smith, McGuire, and Biotech 1</p> <p>***This is the proposed space from the draft space study by Ellenzwieg working with the School's space committee. The student enrollment numbers include expansion of PharmD by 40 per class and additional growth in graduate students beyond current official targets. It does not include needed off-campus space for SW VA and Eastern Shore programs.</p>								

Summary

- VCU is committed to enhancing the facilities for the School of Pharmacy
- Funds will be needed from the Commonwealth for capital renovations and improvements to Smith Building
- PharmD enrollment expansion of up to 175 students proposed to target Northern VA, SW VA and Eastern Shore
- Increased cost of instruction will be funded by dedicated tuition and help from the state through base adequacy
- If funding for renovations can be secured from Commonwealth, benchmarking with other institutions indicates that VCU School of Pharmacy can recruit an outstanding Dean for the next era
- With class size expansion, renovations to Smith and dedicated tuition funds, the VCU School of Pharmacy will be well-positioned to move higher in rankings among the U.S. schools of pharmacy.