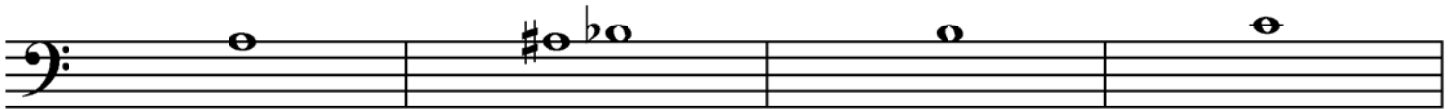
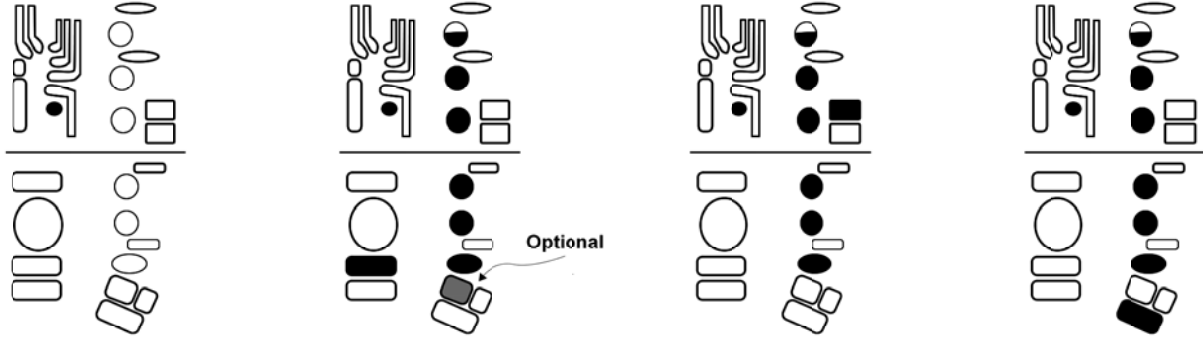
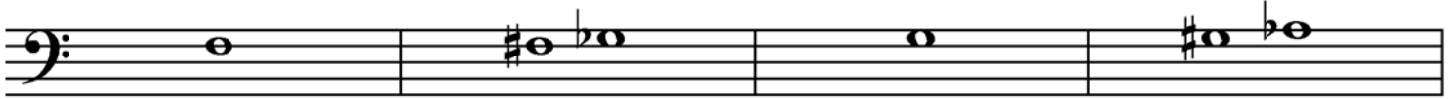


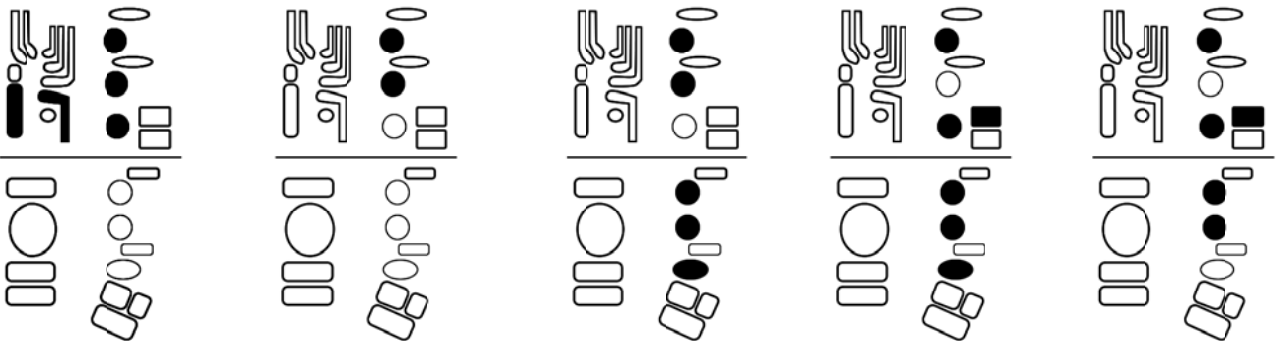
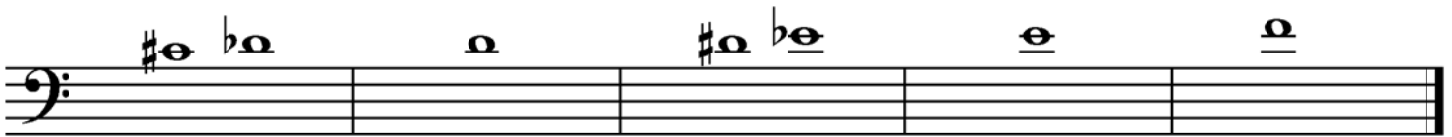
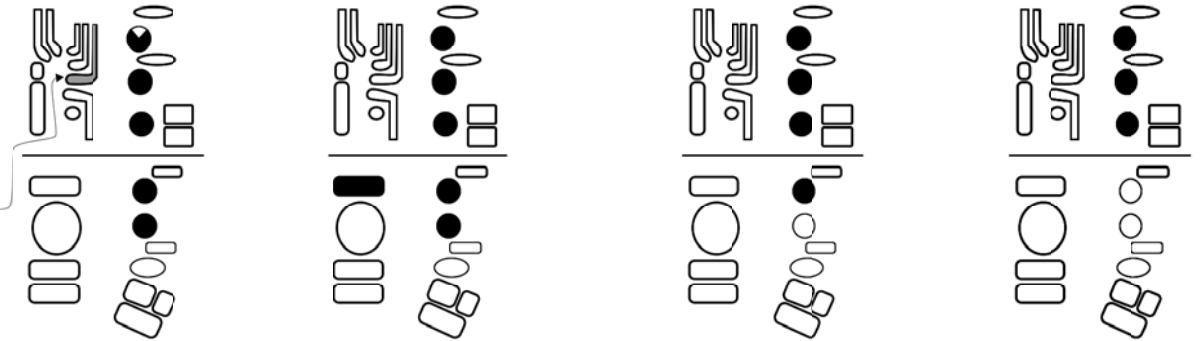
Bassoon Fingering Chart

Open F to high F

The following are the basic fingerings which are used most of the time by bassoonists. For many of these, there are commonly used alternate fingerings. For additional fingering possibilities and more information on the tuning tendencies of these notes, please visit www.vcubassoon.org.



Whisper key comes off for the first time right here! You may need to open the first finger hole just a little or use the shaded key for this note to speak.



Another common fingering for this note (long C#) can be found on the web site.

Notice that the Eb key (left pinky) is down for both of these notes.