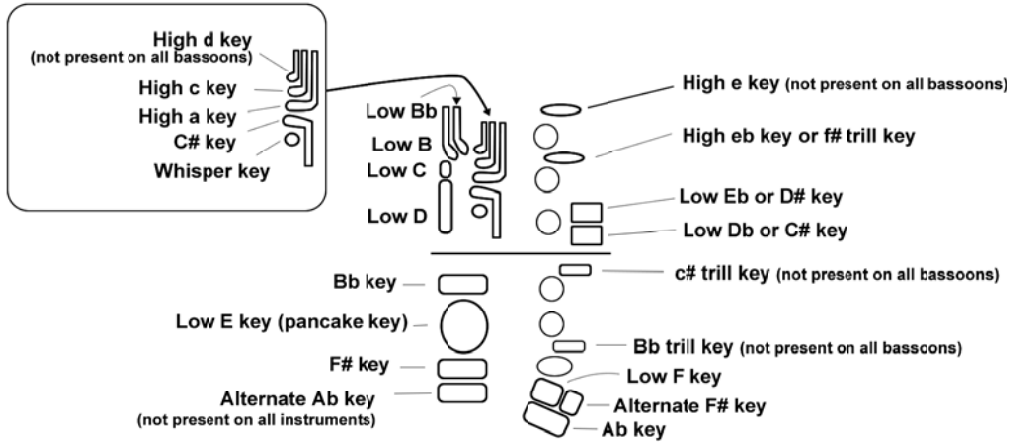


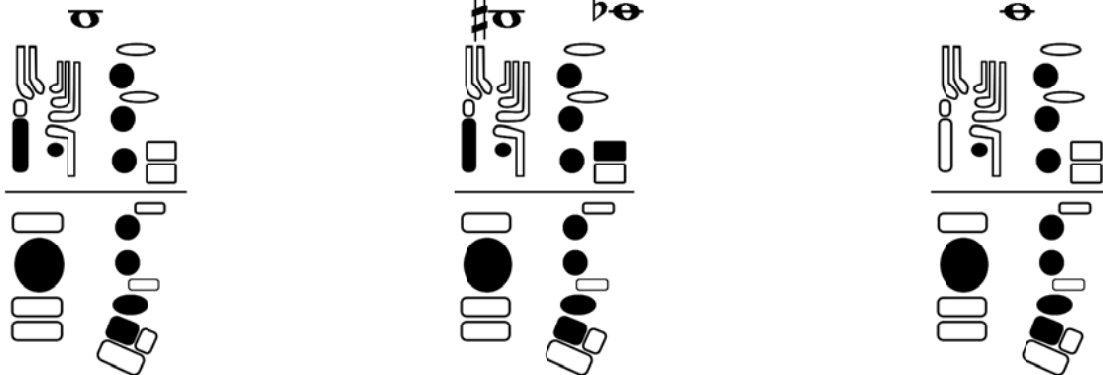
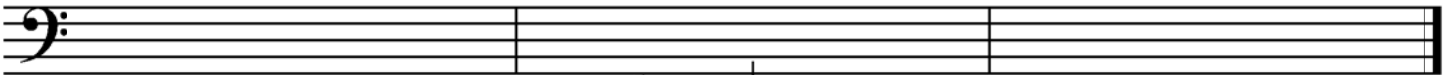
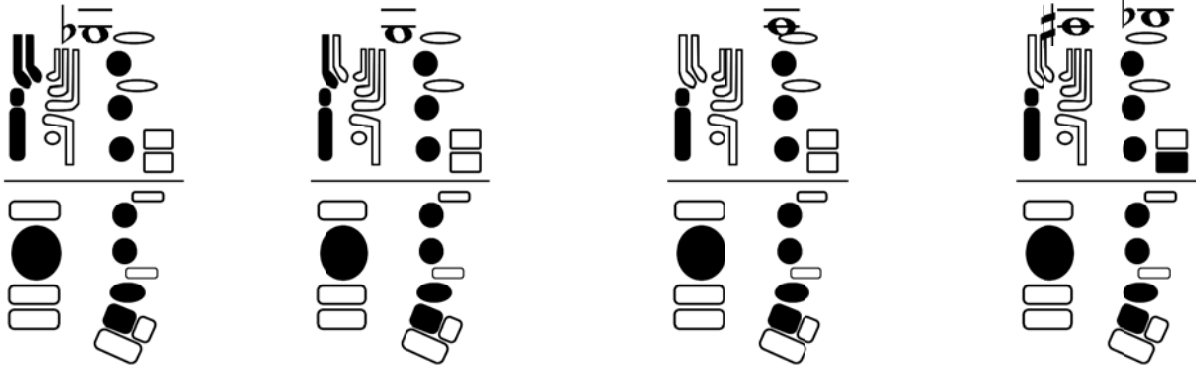
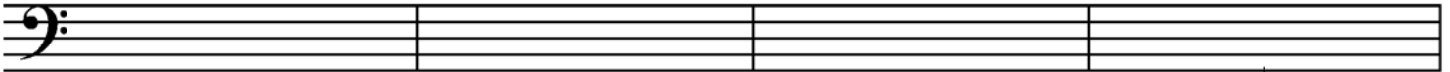
# Bassoon Fingering Chart

## Low notes - Bb to E

### LEGEND



The following are the basic fingerings used by most bassoonists. For many of these, there are commonly used alternate fingerings. For additional fingering possibilities and more information on the tuning tendencies of these notes, please visit [www.vcubassoon.org](http://www.vcubassoon.org).



The low E key (or pancake key) automatically depresses the whisper key. It is, therefore, unnecessary to use the whisper key when playing these notes. In passages that move from this register into the next, however, it is often wise to get the thumb on the whisper key as soon as possible.