

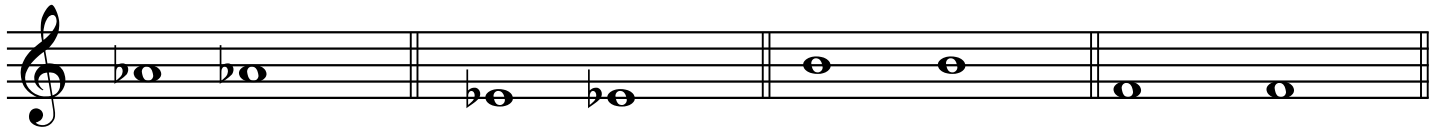
1. Write in the names of the notes below and add a stem to each. (4 pts.)

2. Write in the names of the notes below and add a stem to each. (4 pts.)

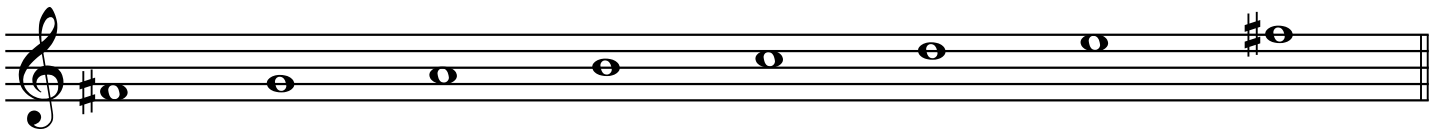
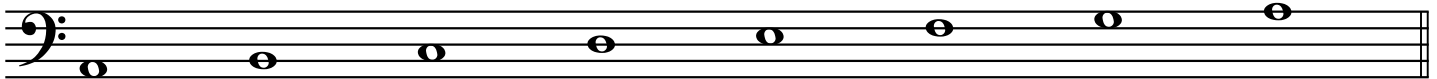
3. Circle all the rhythmic patterns below that equal one quarter note. (6 pts.)

4. Write in the counts. Add bar lines. Don't forget the double bar at the end. (12 pts.)

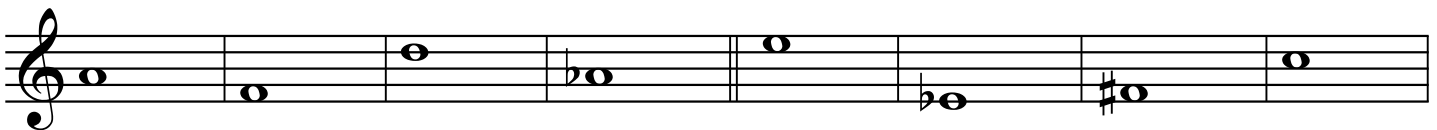
5. Build a Major and a minor triad on each pitch given. (8 pts.)



6. Add the accidentals needed to make the following scales Major. Mark the half steps. (8 pts.)



7. Write a major or perfect interval above the given note. (8 pts.)



M3
melodic intervals

P4

M2

M7

M3
harmonic intervals

P5

M6

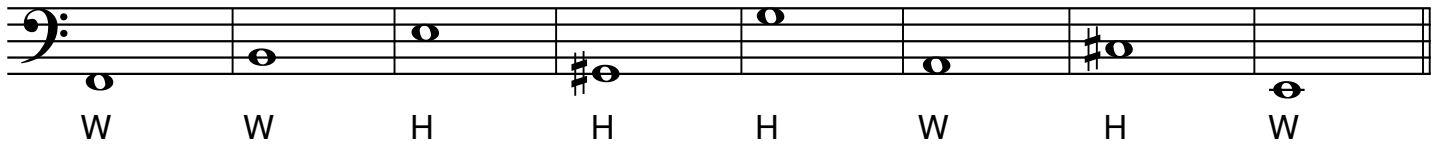
P4

8. Write the flats in the correct order: _____ (7 pts.)

9. Match the terms on the left with the correct definition on the right. (10 pts.)

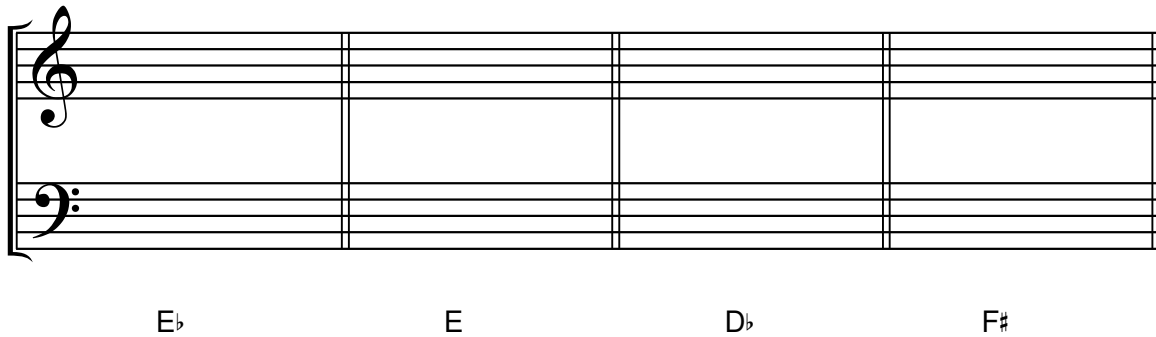
- | | | |
|----------------|-------|----------------------------------|
| a. allegretto | _____ | return to original tempo |
| b. crescendo | _____ | walking speed |
| c. presto | _____ | return to the sign |
| d. espressivo | _____ | very fast |
| e. mezzo piano | _____ | fast, but not as fast as allegro |
| f. a tempo | _____ | gradually louder |
| g. vivace | _____ | lively |
| h. andante | _____ | slow tempo |
| i. dal segno | _____ | with expression |
| j. adagio | _____ | moderately soft |

10. Write a whole step or half step as indicated above each given note. (8 pts.)



A single bass clef staff containing eight whole notes. Below each note is a label: W, W, H, H, H, W, H, W. The notes are: G2, A2, B2, C3, D3, E3, F#3, and G3.

11. Write the following major key signatures. Don't forget to do it in both clefs. (4 pts.)



Two empty musical staves, one with a treble clef and one with a bass clef. Below the staves are four labels: E \flat , E, D \flat , and F#.

12. Analysis. (7 pts.)

- A. What key is this piece in? _____
- B. Should this piece be played faster or slower than adagio? _____
- C. What triad is outlined in the bass staff, measure one? _____
- D. Name the indicated intervals: a. _____ b. _____ c. _____
- E. What triad is spelled on the last chord? _____



A musical score in 3/4 time with a key signature of two sharps (F# and C#). The tempo is marked 'Andante' and the dynamics are 'p'. The score consists of two systems of two staves each. The first system has a treble staff with chords and a bass staff with a melodic line. An interval 'a.' is indicated between the first and second measures of the treble staff. The second system continues the piece, with intervals 'b.' and 'c.' indicated in the bass staff. The final chord in the second system is a triad.

13. Listening.

A. Listen to each of these musical phrases. Decide whether it is in 3/4 or 4/4 meter.

- a. 3/4 4/4 b. 3/4 4/4 c. 3/4 4/4 d. 3/4 4/4

B. Listen to these intervals and identify by number and quality (major and perfect only).
Use M for major and P for perfect.

- a. _____ b. _____ c. _____ d. _____ e. _____ f. _____

C. Are the measures below the same or different from what is played?



- a. same different b. same different c. same different

D. Are the following triads major or minor?

- a. major minor b. major minor c. major minor d. major minor e. major minor

E. Complete the rhythmic dictation below by providing the missing notes:

