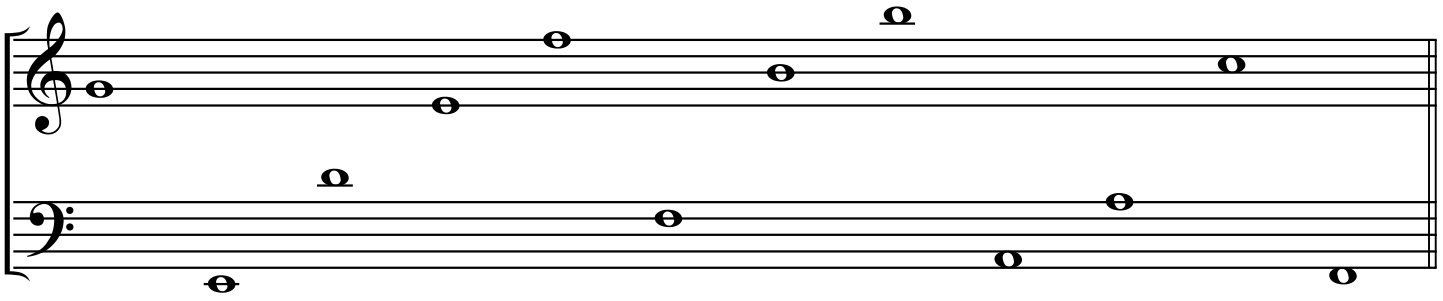


I. Write in the names of the notes below: (12 pts.)



2. Match the symbols on the right with the correct definition on the left. (10 pts.)

a. slur

A-B

b. eighth notes



c. fermata



d. repeat sign



e. whole step



f. eighth rest

B-C

g. accent mark



h. half step



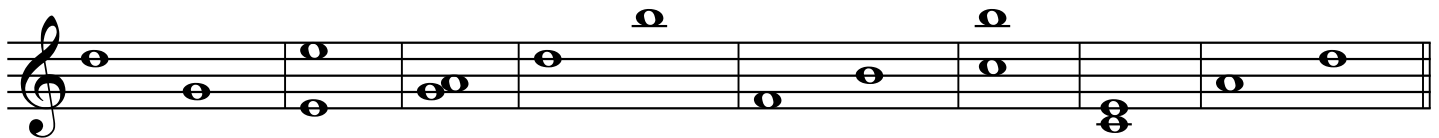
i. tied notes



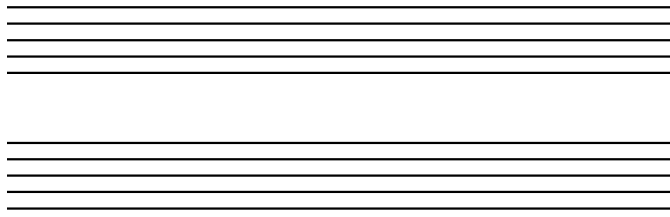
j. time signatures



3. Name the intervals below. Circle the ones that are melodic. (8 pts.)



4. Make a grand staff by adding a bar line, a brace, a treble clef, a bass clef, and an ending bar. (5 pts.)



5. Write the indicated intervals above each given note: (8 pts.)

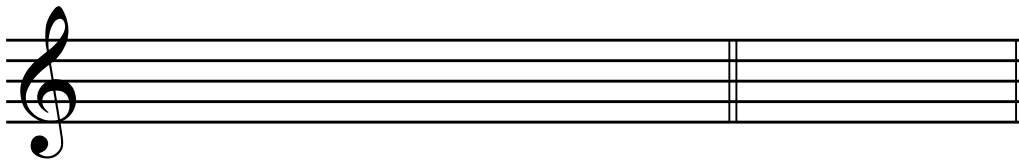
Write these intervals as melodic.

Write these intervals as harmonic.



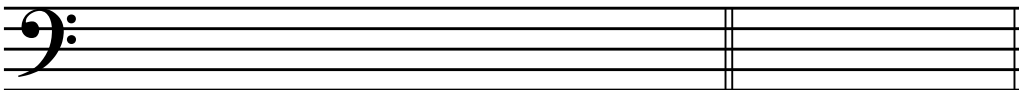
A musical staff divided into two sections by a double bar line. The left section starts with a bass clef and contains four notes: G2, B1, D2, and F2. Below these notes are the numbers 6, 3, 5, and 2 respectively. The right section starts with a treble clef and contains four notes: G4, B4, D5, and F5. Below these notes are the numbers 7, 4, 6, and 3 respectively. The staff ends with a double bar line.

5. Write the following pentachords and triads: (12 pts.)



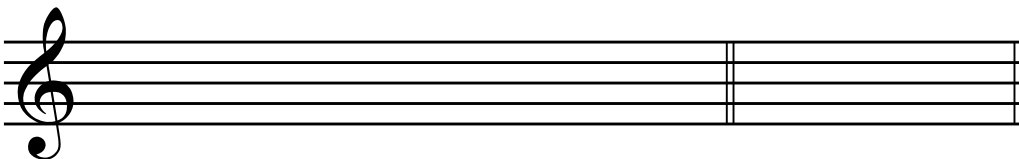
F Major

I



e minor

i



D Major

I

9. Match the terms with their definitions: (10 pts.)

- | | | |
|--------------------|-------|--|
| a. mezzo piano | _____ | smooth, connected |
| b. andante | _____ | medium soft |
| c. legato | _____ | hold longer than the note value |
| d. allegretto | _____ | walking speed |
| e. presto | _____ | very loud |
| f. fermata | _____ | fast |
| g. pianissimo | _____ | go to the beginning and play until the word that means "end" |
| h. allegro | _____ | very soft |
| i. da capo al fine | _____ | very fast |
| j. fortissimo | _____ | fast, but not as fast as allegro |

10. Listening. (14 pts.)

A. Is the phrase of music you hear Major or minor?

- a. MAJOR minor b. MAJOR minor c. MAJOR minor

B. Do the notes played form a half step or whole step?

- a. Half step Whole step b. Half step Whole step c. Half step Whole step

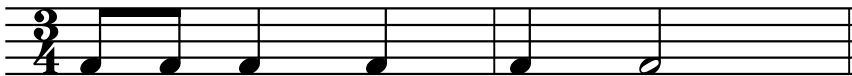
C. Is the interval you hear a Major 2nd or a Perfect 4th?

- a. M2 P4 b. M2 P4 c. M2 P4

D. Is the interval you hear a Major 3rd or Perfect 5th?

- a. M3 P5 b. M3 P5 c. M3 P5

E. Is the rhythm you hear the same or different from the one you see below?



SAME DIFFERENT



SAME DIFFERENT

F. Is the melody you hear the same or different from the one you see?



SAME DIFFERENT



SAME DIFFERENT