

Name: _____

January 29, 2015

1. $\lim_{x \rightarrow 0} \frac{\tan(\pi x)}{2x} =$

2. Answer the following questions about the function $y = f(x)$ graphed below.

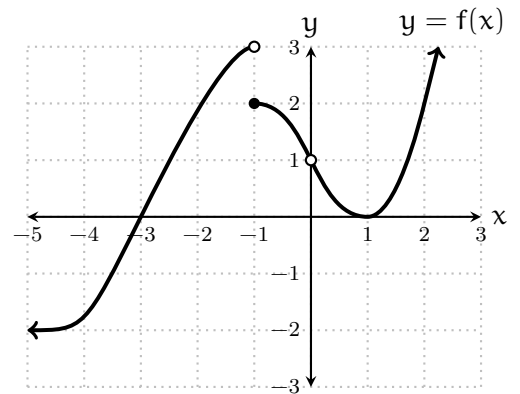
(a) $f(-1) =$

(b) $\lim_{x \rightarrow -1^+} f(x) =$

(c) $\lim_{x \rightarrow -1^-} f(x) =$

(d) $\lim_{x \rightarrow -1} f(x) =$

(e) $\lim_{x \rightarrow 0^+} f(x) =$



Name: _____

January 29, 2015

1. $\lim_{x \rightarrow 1} \frac{\sin(x^2 - 1)}{x - 1} =$

2. Answer the following questions about the function $y = f(x)$ graphed below.

(a) $f(-1) =$

(b) $\lim_{x \rightarrow -1^+} f(x) =$

(c) $\lim_{x \rightarrow -1^-} f(x) =$

(d) $\lim_{x \rightarrow -1} f(x) =$

(e) $\lim_{x \rightarrow -4^+} f(x) =$

