

Chords you can build on C

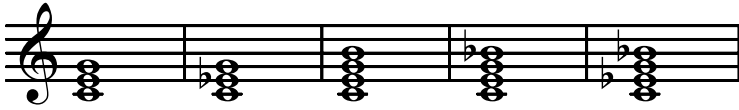
Name: _____

Below are all the chords I can think of that have C (tonic) as their bass note and can be analyzed either diatonically, modally borrowed, or as secondary function.

Provide the correct lead sheet symbol and roman numeral for each! Let me know if I forgot any!

Root position

1st inversion



2nd inversion

3rd inversion



While you're at it, here are the chords you can build on D. Figure these out, too.

