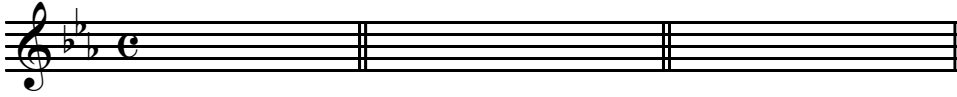


# Modulation

#1

Write the five closely related keys to c minor:



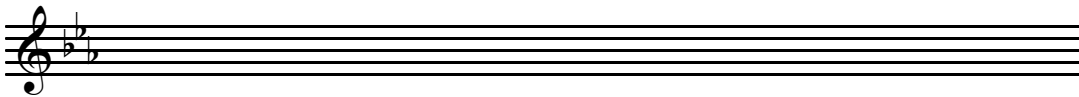
Write the common chords between c minor and Eb major:



c:

Eb:

Write a short chord progression that modulates from c minor to Eb major. Use a pre-dominant in Eb as a pivot chord.



c:

Eb:

Write a melody to go along with your chord progression. Put block chords in bass staff and melody in treble. Choose whatever meter and harmonic rhythm you want!

