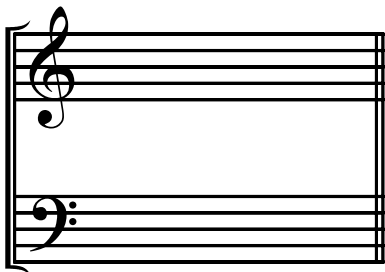


ANSWERS Key Signatures II

Name: _____

The accidentals in a key signature follow a pattern that must be learned and memorized. The examples below show the order and placement for all 7 flats and sharps. For sharps, the first column will always be F# followed by C#, G#, D#, A#, E#, B#. The flats occur in the order: Bb, Eb, Ab, Db, Gb, Cb, Fb. A trick for remembering these (until they become part of your psyche) is, for sharps, Fat Cats Go Down Alleys Eating Butter or for flats, BEAD Greatest Common Factor.

1 2 3 4 5 6 7
f c g d a e b



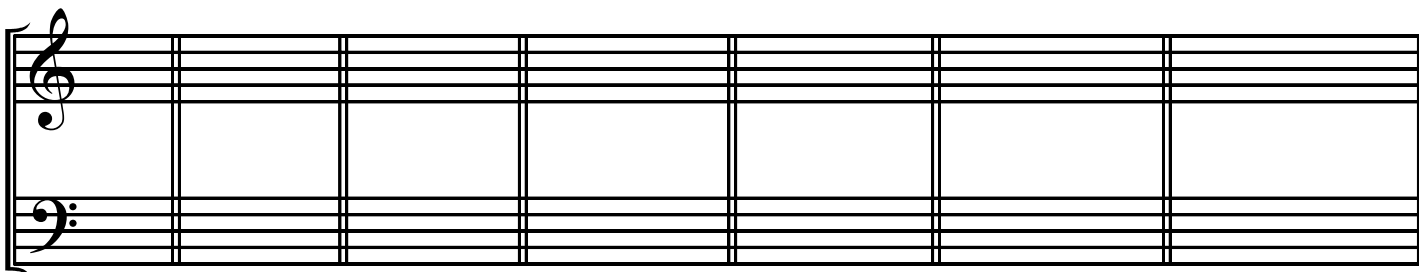
1 2 3 4 5 6 7
b e a d g c f



Write the key signatures for the indicated major keys:



G D A E B F# C#



F B \flat E \flat A \flat D \flat G \flat C \flat