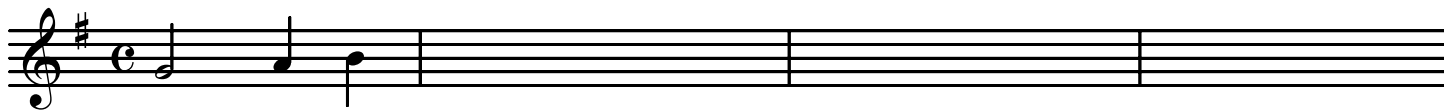


MHIS 145: Write-your-own sightsinging melodies!

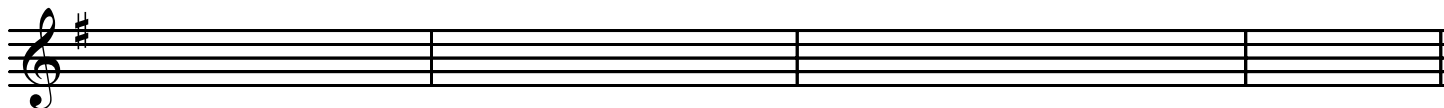
Complete the following melodies using only stepwise motion and rhythmic values comparable to those we are studying in aural skills. Follow the indications for period construction (parallel or contrasting) and cadence types.

Parallel period, stepwise motion only, range: d-r-m-f-s

Half cadence

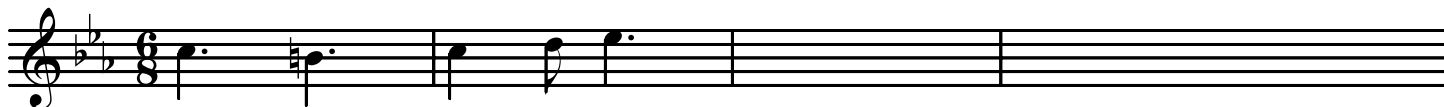


Authentic cadence

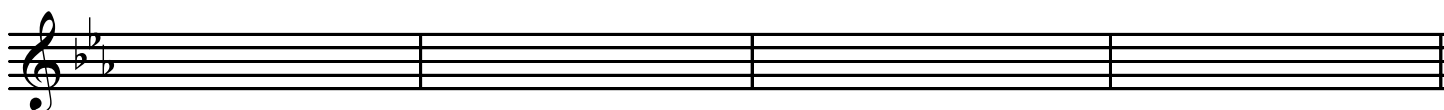


Contrasting period, stepwise motion only, range: t-d-r-m-f-s

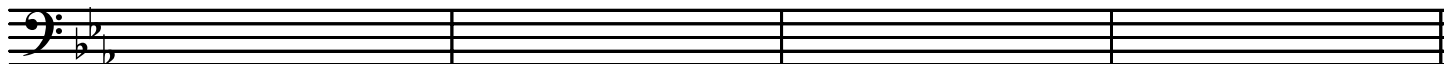
Half cadence



Authentic cadence



Parallel period, some leaps in tonic, range: 1 octave



Contrasting period, some leaps in tonic, range: 1 octave

